

K. Hofacker

MPM MultiPlugMate

Manual for Version 1.5

Table of contents

1.	Overview	4
1.1.	Introduction	4
1.2.	What is saved?	4
1.2.1.	LAN/WLAN settings	5
1.2.2.	Proxy settings	5
1.2.3.	Default printer	5
1.2.4.	Mozilla / Firefox settings	5
1.2.5.	Network drives	5
1.3.	Initial profile	5
2.	Mode of Operation	6
2.1.	Program start	6
2.2.	Program window	6
2.2.1.	General	6
2.2.2.	Profiles	7
2.2.3.	Comfort functions	10
2.3.	Options	12
2.3.1.	Program language	12
2.3.2.	Display warning notes	12
2.3.3.	Show profile data tool tips	13
2.3.4.	Show help tool tips	13
2.3.5.	Start automatically after logon	13
2.3.6.	Create quick launch shortcut	13
2.3.7.	Sloppy cable test	13
2.3.8.	Add network drives to Windows user profile	13
2.3.9.	Show initial profile	14
2.3.10.	Restore profiles on program start	14
2.3.11.	Restore net drives on program start	14
2.3.12.	Restore on auto start only	14
2.4.	Profiles management	15
2.4.1.	All (profiles)	15
2.4.2.	Nothing (no profiles)	15
2.4.3.	All (all users)	15
2.4.4.	Nothing (no users)	15
2.4.5.	Publish	15
2.4.6.	Lock	16
2.4.7.	Overwrite existing profiles	16
2.4.8.	Include executable files	16
2.4.9.	Explorer	16
2.4.10.	Done	16
3.	Program Execution upon Profile Activation	17
4.	Program Limits	18
4.1.	Computer name, domain and workgroup	18
4.2.	Dial-up connections	18
4.3.	MS Firewall client	18
4.4.	Languages	18
5.	System Requirements	19
6.	Registration / Licensing	20
7.	Legal Disclaimer	22

1. Overview

1.1. Introduction

MPM MultiPlugMate is a program for administering network setting profiles and is especially suitable for mobile computers. This is particularly true for those that are frequently connected to different LAN/WLAN networks.

This program isn't intended to define network settings. To do this, MS Windows has all the necessary comfort. MPM MultiPlugMate saves complete sets of network settings in profiles. These can be activated with a simple mouse click, if required.

With MPM MultiPlugMate it is possible to integrate a computer into a network environment with a single mouse click. The computer is then immediately viable!

The program stores local area network settings, such as IP addresses and DNS servers of all network adapters, default printer, as well as all network drives, in the profiles. The proxy server settings for MS Internet Explorer and Mozilla/Firefox are also taken into account. This program works on Windows 2000 and Windows XP.

When saving a profile, MPM MultiPlugMate writes all of the necessary information to a profile file. The profiles are saved user-specific, but independently from the logon type (workgroup or domain login). When activating a profile, the information stored in the profile file is read and transferred to the corresponding system settings. Deleting a profile merely removes the profile file from the hard drive.

An unusual feature of MPM MultiPlugMate is that the user doesn't need to be logged in as an administrator in order to save and activate network settings. Working with local administrators rights in a network or on the internet contains incalculable safety risks in regard to viruses, trojans, dialers, spyware, etc. MPM MultiPlugMate generally contributes to an increase in the security level when working with the computer.

MPM MultiPlugMate therefore consists of two components: the program MPM.EXE who's GUI the user sees and the service MPMSVC.EXE which works completely in the background. This service works in the safety context of a user with local administration rights and automatically starts simultaneously with Windows. This service handles all of MPM.EXE's work which requires local administration rights. The existence of the service MPMSVC.EXE is completely hidden from the user. Everything runs automatically.

The program does NOT run on MS Windows NT 4, MS Windows 95, 98, or ME! System interfaces necessary for this program are not available on these systems. For instance, changing the IP address inevitably leads to a reboot of the system. For this reason MPM MultiPlugMate doesn't support the operating systems mentioned above. The operating system type is determined at the program start. The program will be concluded with an appropriate message, if, at a minimum, Windows 2000 wasn't found.

Note: When installing a new version of MPM MultiPlugMate over an existing version (update), a deinstallation (via Windows Start menu -> or Control Panel) should always be executed first. After the previous version is removed, the new version can be installed. It is guaranteed that the existing profiles and licenses, as well as all program settings, will survive this procedure.

1.2. What is saved?

The following information is stored in the profiles:

1.2.1. LAN/WLAN settings

The IP, DNS and WINS settings of all network adapters are recognized. Network adapters are usually Ethernet interfaces, but they may also be DSL or ISDN connectors.

1.2.2. Proxy settings

Proxy servers are recognized with their IP addresses or network names and ports. Address ranges to be ignored, etc. are also managed. All of these details are used by the MS Internet Explorer and also by most other programs which access the internet.

Note: The MS Internet Explorer program must be closed when the profile is activated in order for the amendments by MPM MultiPlugMate to be effective. MPM MultiPlugMate recognizes whether the program is still running and issues a message to this effect.

1.2.3. Default printer

The printer installed as the default printer is recognized whether it is a local or a network printer.

1.2.4. Mozilla / Firefox settings

If the Mozilla Web Suite or the web browser Mozilla Firefox is installed, MPM MultiPlugMate recognizes and manages the complete proxy settings of these programs. (Support for Opera and Netscape isn't implemented yet, however, it's available on request.)

Note: The programs Mozilla and Mozilla Firefox must be closed when the profile is activated in order for the amendments by MPM MultiPlugMate to be effective. MPM MultiPlugMate recognizes whether the programs are still running and issues a message to this effect.

1.2.5. Network drives

All assigned net drives (drive letters which are assigned to network resources) are recognized and managed. On request, the program can also remember the user names and passwords needed to establish the connection. This information is stored as encrypted data, of course.

1.3. Initial profile

The first time the program is started the state of the computer is saved in an "Initial profile." This profile isn't usually displayed in the list of the profiles. However, you can make this profile visible with the option dialog, option "Display initial profile."

After it was made visible, the initial profile can be activated exactly like the other profiles. You can always return to a defined state if problems occur. The initial profile can only be deleted or overwritten in the file system (that is with Windows Explorer).

2. Mode of Operation

2.1. Program start

When the program is started, MPM first checks to see whether all of the required system components are available (Scripting, Windows Scripting Host, WMI and more). The operating system found must be at least Windows 2000 (or newer). Then the availability of required system programs is checked. After a check has been made as to whether there is a valid license or the 30 days evaluation period hasn't expired, MPM checks to see if the service MpmSvc is working properly.

If one of the conditions mentioned above isn't met, the program issues a message and stops itself.

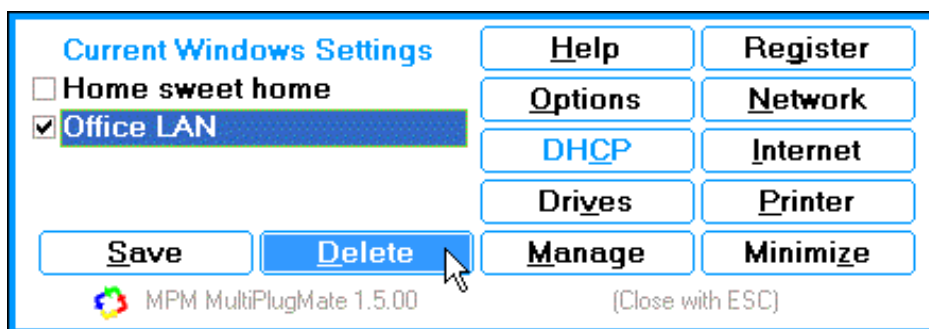
If the service MpmSvc isn't running, MPM MultiPlugMate first tries to start the service itself. This won't work for users without local administrator rights. A message is issued which explains this and MPM stops itself. Normally, the service MpmSvc starts automatically when Windows starts and is ready to work when MPM wants to access it.

2.2. Program window

After the program start the program window is immediately visible. Moreover, a small icon in the so-called "System Tray" near the Windows clock on the right hand side of the Windows taskbar is visible. When the program executes more extensive work, the icon is marked with a red cross. This indicates that MPM MultiPlugMate doesn't accept any instructions at the present time.

The program window can be closed with the "Minimize" button. Then it can only be reached via the small icon near the Windows clock. You can trigger the window using the context menu (click with the right mouse button on the icon), or you can activate the window again by double-clicking on the icon.

2.2.1. General

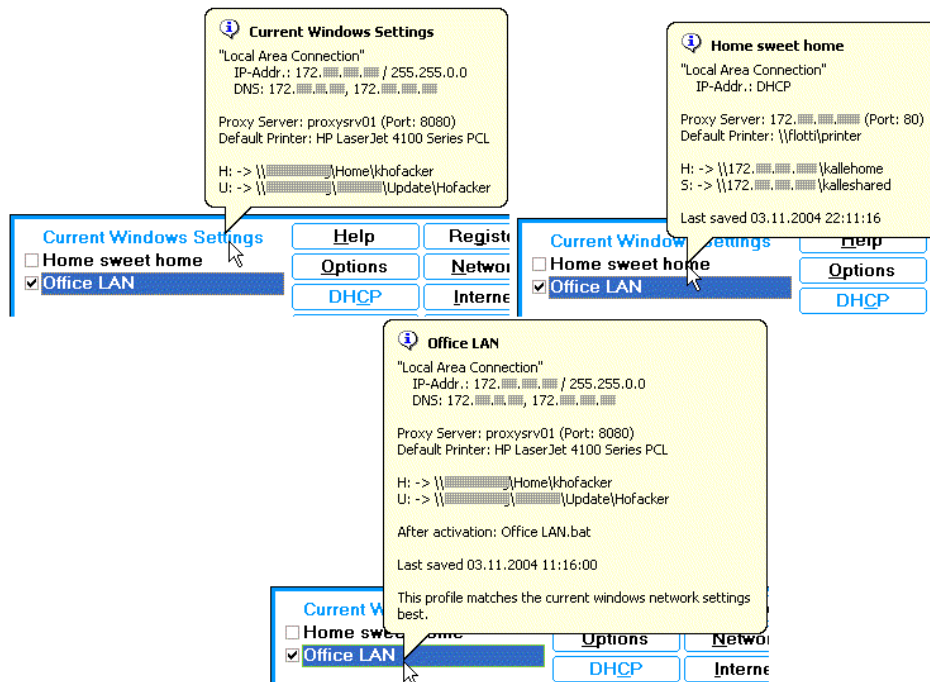


The MPM MultiPlugMate main window

MPM's main window is divided vertically into two ranges: On the left hand side all of the available profiles are listed, and the buttons "Save" and "Delete" are shown. These buttons directly affect the profiles in the list. More buttons are available on the right hand side which can invoke more functions (help, profile administration, explicit network drive activation, and more).

Normally, one of the profiles is provided with a check mark in the profile list. This signifies that the computer's current settings most likely correspond to this profile. The check mark

does NOT indicate that the profile in question EXACTLY represents the current system settings!



MPM shows details about the profile when the mouse pointer rest on it

If you rest the mouse pointer on a profile name in the list for a second, a window ("balloon") appears in which the profile's details are displayed.

Note: The first entry in the profile list is always "Current Windows Settings." This entry is highlighted in a different color. If you rest the mouse pointer on this entry for awhile, a window ("balloon") appears in which the details of the current Windows network settings are shown.

2.2.2. Profiles

MPM saves the entirety of the computer's current network configuration in a "profile" which can be restored when required. The profiles are saved in encoded files. These files are stored in different locations for each user, and independent of the logon type (to a workgroup or domain login).

When saving a profile, MPM MultiPlugMate writes all of the necessary information into a profile file. When activating a profile, all of the information saved in this file is read and transferred to the corresponding system settings. "Deleting" a profile merely removes the profile file from the hard drive.

Note: Of course, the pseudo profile "Current Windows Settings" can't be deleted or activated.

2.2.2.1. Mark or activate profiles

In the list of available profiles, it is necessary to distinguish between marked profiles and activated profiles.

You can mark a profile with a single mouse click on the name of the profile, NOT on the small activation box to the left hand side of the list. Its name is then shown inverted in a dark box.

Only one profile can be marked at a time. If you mark a profile name, all other profile names will be unmarked.

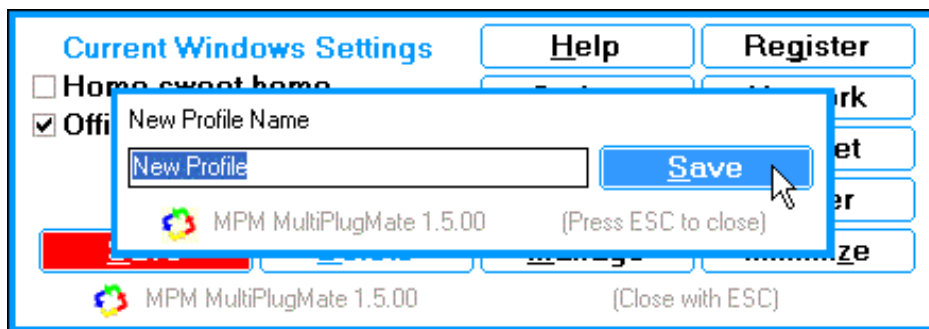
To activate a profile simply click (left mouse button) once on the small activation box to the left hand side of the profile name, NOT on the name itself. This starts the complete take-over of the network and proxy settings stored in the profile. Only one profile can be activated at a time. Activating one profile deselects all other profiles.

Note: Of course, the pseudo profile "Current Windows Settings" can't be deleted or activated.

The profile provided with a check mark in the profile list indicates that it most likely corresponds to the system's current settings. The check mark does NOT indicate that the profile in question EXACTLY represents the current system settings! You can quickly check this using the "balloon" function: If you let the mouse pointer rest on a profile name or on the entry "Current Windows Settings" for awhile, a window ("balloon") appears in which the details of the entry are displayed.

2.2.2.2. Save profile

This function stores the computer's entire current network and proxy settings in a profile file.



A name must be entered in order to save the profile

First, the program asks for a profile name. You should create a unique and concise "speaking" name, like "At home", "Company", or "Customer Miller".

This action can be canceled using the ESC key.

2.2.2.3. Activate profile

To activate a profile simply click with the left mouse button on the activation box to the left hand side of the profile name. Before activating a profile, you can inspect the settings stored in that particular profile with the "talking balloon" function: just move the mouse pointer onto one of the profile names and wait a second.

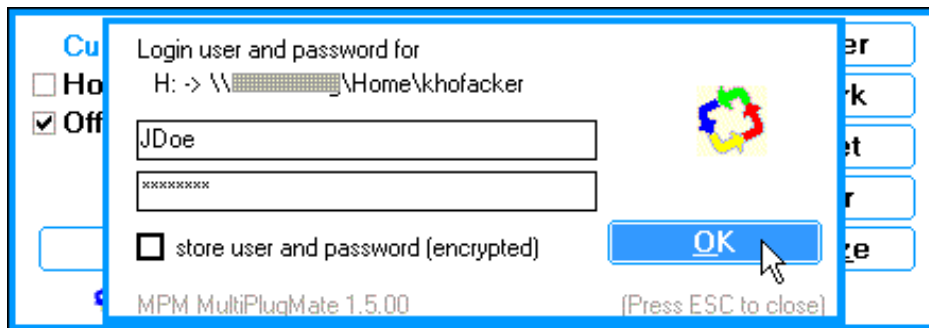
Tip: Profiles can be also directly activated using the context menu. This menu can be opened by clicking with the right mouse button on the program icon near the Windows clock. All profiles are listed in this menu and the profile which best corresponds to the current Windows network setting is marked with a small check.

Before activating a profile, MPM MultiPlugMate checks to see if the LAN cable is plugged in properly, or if there is an existing wireless connection to a WLAN. If that isn't the case, the user is asked to remedy the problem. The user can, however, ignore the message as well.

Note: If the profile to be activated requires a working DHCP server to obtain a TCP / IP address, proper network access via LAN / WLAN is necessary. If you ignore the warning message in this case, the profile will be activated, but you won't have a valid IP address. However, this is indispensable for any network communication. If necessary, you can request a new IP address in a separate step with the option "Refresh DHCP Lease" (see below).

After that, MPM MultiPlugMate checks to see if there are any programs running for which the conversion of the network settings is critical. This concerns MS Internet Explorer, and, if installed, the Mozilla Web Suite and Mozilla Firefox. You can't ignore this warning. The programs in question must be closed manually before MPM MultiPlugMate can proceed with the profile activation.

If there are network drives to be restored for the profile that require authentication, then MPM MultiPlugMate asks for a user name and password in the following dialog:



MPM MultiPlugMate asks for authentication parameters

In the dialog you have the option of checking the "Remember user and password (encrypted)" box. If this box is activated, MPM saves the information in an encrypted form and carries out the authentication automatically next time. This means you don't have to enter it each time.

Finally, MPM MultiPlugMate confirms the profile activation with a short message.

Input of user and password can be canceled using the ESC key. Since no valid authentication was carried out, the network shares aren't connected to the related network drives. However, you can connect the drives in a separate step with the option "Drives" (see below).

Note: If a user with local administration rights uses MPM MultiPlugMate to activate a profile, he should log off BEFORE he accesses the internet or e-mail! He should log on as a normal less-privileged Windows user or Windows power user, and then connect to the internet. Why? Viruses, worms, dialers and trojans or helper programs in general run in context and with the access rights of the Windows user currently logged on. If these rights are limited, the pest can't usually nest on the system successfully, and direct harming routines can only attack the files of the current user. System files and the critical areas of the registry are safe! There is a tremendous gain in safety compared with the minor annoyance of logging off and logging on again. - MPM MultiPlugMate doesn't require a Windows logon with administrator rights, because the work is carried out by the system service MpmSvc. MPM is fully operational with Windows power users and even normal Windows users. MPM MultiPlugMate significantly raises the security level of your PC.

2.2.2.4. Delete profiles

This operation refers to the profile currently marked, NOT necessarily to the profile currently activated! For the distinction between the marked profile and the activated profile see above. Once a profile has been deleted, it can't be activated anymore, unless the profile is recreated.

The operation refers to the currently marked profile, NOT necessarily to the currently activated profile! For the distinction between the marked profile and the activated profile see above.

Note: The deletion can't be reversed. A short message warns you about this.

Deleting a profile means the deletion of the profile file from the hard drive, but no network or proxy setting is changed by this operation, even if the deleted profile is the profile currently activated.

2.2.3. Comfort functions

All of the functions described below can be triggered via the system tray icon context menu, or by the control buttons in the MPM MultiPlugMate main window:

2.2.3.1. Options

This calls the "Options" dialog. You can define your preferences about the programs behavior here. This dialog is described in a separate chapter below.

2.2.3.2. Network

This option calls Windows' network settings configuration dialog. This can also be called from the Windows System Control.

2.2.3.3. Internet

This option calls Windows' internet settings configuration dialog. This can also be called from the Windows System Control. The tab page "Connections" is immediately displayed. From this page you have access to the relevant LAN and proxy settings.

2.2.3.4. Printer

This option calls Windows' printer configuration dialog. This can also be called from the Windows System Control. From here, you can select a printer, access its properties, and determine the default printer.

2.2.3.5. DHCP

This option is only available when the LAN cable is plugged in properly, or there is a working connection to a WLAN. The profile currently activated must be configured to work with a DHCP server in order to obtain IP addresses.

Refreshing the DHCP lease might be necessary after changing certain network settings, or after activating a profile without a working connection to a LAN / WLAN.

2.2.3.6. Drives

If this operation is started, all of the network drives stored in the profile currently activated are disconnected, and then reconnected. The profile currently activated is marked in the profiles list with a small check. This means that this profile most likely corresponds to the current

Windows network setting.

The reconnection of network drives makes sense e.g. under Windows XP if the network drives which request authentication are stored in the Windows user's profile, and the connection of these drives was canceled by the user during Windows logon. This option is useful if network drives shares were unavailable during the Windows logon.

2.2.3.7. Manage

This button calls the administration dialog for profiles. This is explained below in a separate paragraph.

Note: The command button "Manage" is only available when the current Windows user has local administrator rights. If this isn't the case, this option is deactivated.

2.2.3.8. Help

This command button calls the online help in the browser.

2.2.3.9. Register

This command button has the caption "Register" for unregistered installations of MPM and the caption "About" for licensed installations.

In an unregistered installation after clicking on "Register," the "About" dialog is shown during the 30 days evaluation period, and provides information about the days remaining in the test period.



This dialog shows the remaining evaluation period days

Clicking on "Register NOW!" calls up the registration dialog. There is detailed description of this dialog in a separate chapter below.

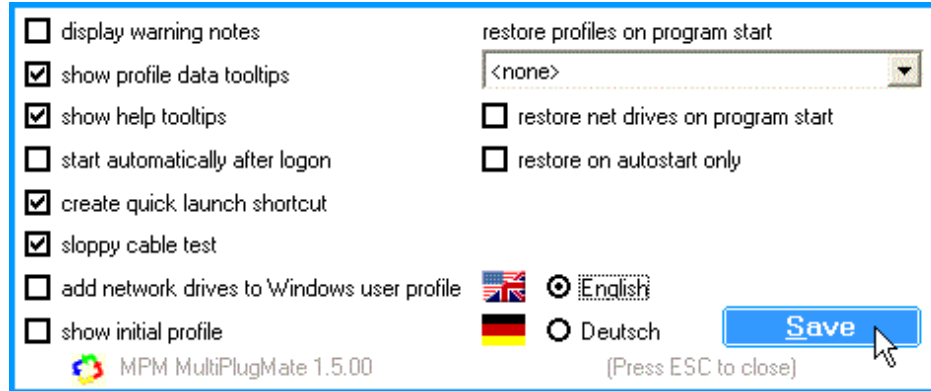


After registration, the license owner's data is shown

After a successful registration, the license owner's name, address and other data is shown in the "About" dialog.

2.3. Options

The dialog "Options" can be called via a button in the main window or by the context menu in the system tray.



"Options" dialog

2.3.1. Program language

You can select English or German (Deutsch) as the program language. (When specifically requested, other languages may be available.)

After changing the program language, you receive a message informing you that the new setting is effective after the next start. You must then quit MPM MultiPlugMate, and restart the program in order to reload all of the labels and messages.

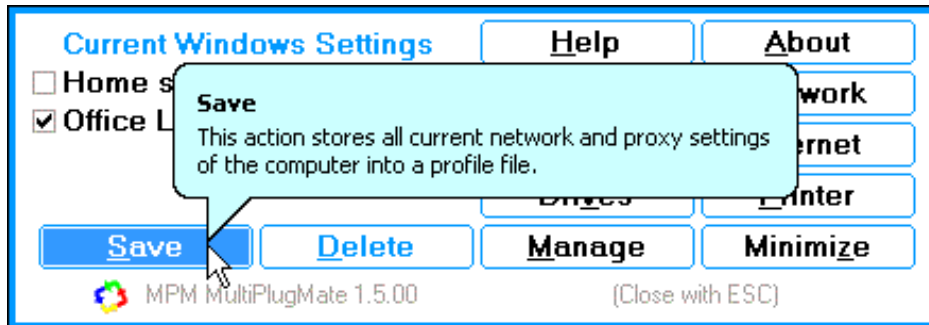
2.3.2. Display warning notes

Clear this option if you want to suppress detailed warning and explanation messages. Advanced users don't need these messages. Newbies shouldn't deactivate this option in order to better understand the program operation.

2.3.3. Show profile data tool tips

If you clear this option, MPM MultiPlugMate won't show the balloon tool tips with profile details about the profiles names.

2.3.4. Show help tool tips



The tool tip help introduces newcomers quickly to the program.

If this option is activated, the "speech balloons" help information is shown on all operating elements of MPM MultiPlugMate.

2.3.5. Start automatically after logon

If this check is activated, MPM automatically starts with each additional logon of the current user. This may be useful in connection with the options explained further on: "Restore profiles on program start", "Restore net drives on program start" and "Restore on auto start only".

2.3.6. Create quick launch shortcut

If this option is checked, MPM MultiPlugMate creates a quick launch program icon in Windows' Quick Launch Area on the left hand side of the Windows control panel. You can quickly start MPM MultiPlugMate at anytime with a simple mouse click on this icon.

Note: Make sure that hiding of the Windows' Quick Launch Area is not set in the Windows control panel's properties.

(Note for Windows XP users: the properties in the taskbar can't be set to hide the quick launch area!)

2.3.7. Sloppy cable test

Normally, MPM MultiPlugMate checks for a proper LAN / WLAN connection during the program start before it activates a new profile. A working network connection is necessary only in special cases. If this option isn't checked, MPM MultiPlugMate performs the check only if the profile to be activated needs to obtain the TCP / IP address from a DHCP server.

2.3.8. Add network drives to Windows user profile

If this option is checked, MPM MultiPlugMate writes the drive's parameters to the current Windows user's profile when restoring network drives during profile activation. This has the effect that when the user logs on to Windows the next time, Windows tries to restore the affected network drives. If the network shares are unavailable, restoring the network drives

fails. Where authentication is necessary, the user must enter the name and password manually.

If this option isn't checked, MPM MultiPlugMate administrates the network drives connections "exclusively". The network drives will be connected when the user activates the profile, or by the "Refresh Network Drives" action. This setting makes sense for the typical MPM PC, with which you usually login to different networks.

If the option "Remember user and password (encrypted)" was checked during a previous reconnection of the profile's network drives, the authentication parameters (user name and password) don't need to be entered anymore in the future. In contrast to this, if the user isn't logged onto a Windows NT domain, Windows always insists on the authentication parameters! Refer to the chapter on "Restore net drives on program start."

2.3.9. Show initial profile

Normally, MPM MultiPlugMate hides the "Initial profile" in the list of available profiles. If you want to restore the "Initial profile" to the list, you must first check this option. You can then select it from the list of profiles.

However, you can't delete the "Initial Profile".

2.3.10. Restore profiles on program start

If a profile from the list of the defined profiles is given here, this profile will be automatically activated on each program start (or only after the automatic start with the Windows logon, see "Restore on auto start only"). That guarantees that the computer always has the same network settings after each restart.

2.3.11. Restore net drives on program start

If this option is activated, then all network drives stored in the current profile are restored automatically after each program start. The current profile is the profile in the list marked with a check, which indicates that this profile corresponds most likely to the current windows settings. If the option "Restore on auto start only" is checked, then the restoration of the net drives is only executed during the automatic program start after logon.

Hint: In connection with this option, it makes sense to use MPM MultiPlugMate on computers with static network settings (always runs in one network environment), and it isn't a member of a NT domain: if the option "Add network drives to Windows user profile" is deactivated, and the option "Store user and password (encrypted)" in the profile save dialog is activated, then the activation of the option "Restore net drives on program start" results in fully automatic restoration of the net drives after each Windows restart. After logging on, the network drives are always ready to work without the entry of authentication parameters.

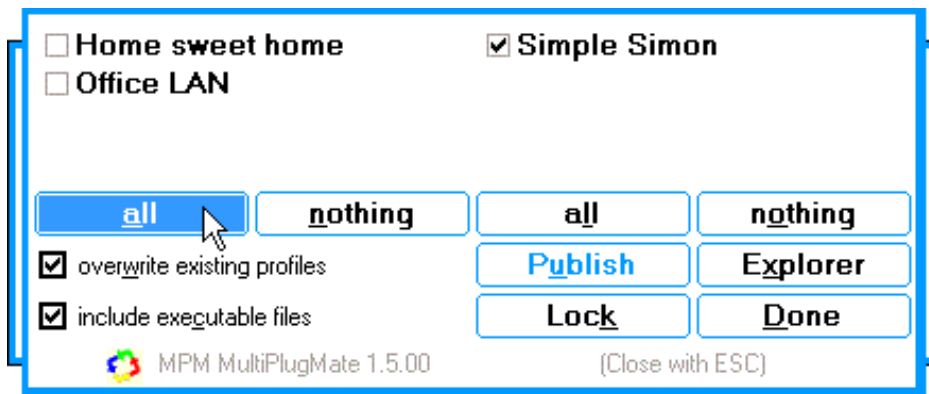
2.3.12. Restore on auto start only

This option affects the options "Restore profiles on program start" and "Restore net drives on program start." If this option is activated, restoring is only executed if MPM MultiPlugMate has started automatically immediately after the Windows logon (see option "Start automatically after logon"). If this option is cleared, then the two other options are effective after each MPM program start.

2.4. Profiles management

With the dialog "Manage" it is possible for administrators (Windows users with local administration rights) to publish profiles to other users on the same computer, or to take releases back ("Lock"). Moreover, Windows Explorer can be started in the profile directory of the current user, and further file operations (like file backup, creating associated executable files) can be carried out.

Note: The dialog "Manage" is only available, when the current Windows user is equipped with local administrator rights. Otherwise, this option is deactivated.



The dialog "Manage" facilitates the publishing of profiles

In the dialog all of the profiles defined for the current user are listed on the left hand side. On the right, a list with Windows users found on the current computer is shown. However, the current Windows user is not listed there. Profiles and users can be selected and deselected in the activation boxes of the two lists now.

2.4.1. All (profiles)

All listed profiles are marked for the actions "Publish" or "Lock".

2.4.2. Nothing (no profiles)

No profile is marked for the actions "Publish" or "Lock" (all boxes are cleared).

2.4.3. All (all users)

All listed users are marked for the actions "Publish" or "Lock".

2.4.4. Nothing (no users)

No user is marked for the actions "Publish" or "Lock" (all boxes are cleared).

2.4.5. Publish

All selected profiles will be published to all selected users. This is done by copying the profile files into the user's individual profile directories. If the option "Overwrite existing profiles" is activated, MPM overwrites the user's existing profile files of the same name. If associated executable files should also be copied, the option "Include executable files" must be activated. After the files are copied, MPM automatically sets the appropriate file rights for Windows power users and normal Windows users.

2.4.6. Lock

The "Lock" function removes profiles from selected users. If no profile is selected, then all profiles whether they are listed in the profiles list or not are removed from the selected users. If one or more profile is selected, only the selected profiles are removed from the selected users.

Locking a profile means to delete the profile file from the user's profile directory. If the associated executable files are also deleted depends on the option "Include executable files."

Attention! Once a profile has been removed from the user's profiles directory, it can't be activated anymore, until the profile is recreated or published again. Deletions can't be reversed. A short message warns you about this.

2.4.7. Overwrite existing profiles

If this option is activated, then existing profiles of the same name are overwritten in the user's profile directory when the profiles are published. This option doesn't affect the locking / removing of profiles.

2.4.8. Include executable files

If this option is activated when profiles are published, then all of the executable files associated with a profile are published to the user's profile directory, too. Locking profiles means that all associated executable files are removed from the user's profile directory, too.

Note: When executable files are published to other users who don't have administrator rights, these users won't have sufficient rights to execute these files or programs. E.g. if a batch file tries to install or start a Windows service, this will fail for normal Windows users or Windows power users.

2.4.9. Explorer

A mouse click on this button starts the Windows Explorer in the current user's profile directory. This gives the administrator full access to all profile files and executable files. He can then backup, delete files, or create e.g. batch files for execution during profile activation.

2.4.10. Done

This button closes the dialog "Manage". Control is returned to the MPM main window.

3. Program Execution upon Profile Activation

It may be useful to execute certain programs with the activation of a profile. E.g. it may be required to start a VPN client (program or Windows service, VPN = virtual private network) after the activation of a particular profile. This is done to make a computer ready for work without further manual operation.

MPM MultiPlugMate provides the option of executing programs before or after the activation of a profile. The allocation of executable programs to profiles is done by a name convention: Suppose there is a profile named "Company Net" Then a profile file with the name "Company Net.mpm" exists in the profile directory.

If e.g. an executable file named "Company Net.bat" or "Company Net_post.bat" is created, then this file will be automatically executed by MPM MultiPlugMate after the activation of the profile "Company Net" If a file named "Company Net_pre.bat" exists in the profiles directory, then this file will also be executed before the activation of "Company Net" - Files of the types .BAT (MS-DOS batch file), .CMD (Windows command file), and .VBS (Visual BASIC script file) are permissible as executable files.

Note: For security reasons, all executable files will be executed by MPM MultiPlugMate in the security context of the current Windows user. Users who don't have any administrator rights may not have sufficient rights for executing these files or programs. E.g. if a batch file tries to install or start a Windows service, this is only successful for users with local administrator rights, not for normal Windows users or Windows power users. (In a later version of MPM MultiPlugMate, this option will be made available for normal users. This is easy to accomplish using the existing service "MpmSvc," but it requires well-thought out mechanisms, such as encryption and authentication to avoid serious security problems like the execution of arbitrary codes by viruses or other malware programs.)

When activating a profile, MPM MultiPlugMate executes the allocated executable files synchronously. This means that MPM waits until the executable commands are finished completely before it proceeds with any further actions. MPM doesn't do any error checks. At the most, it notices when an executable file can't be started. However, it is always a good idea to check the success of the program execution after profile activation, e.g. by trying to establish a connection.

4. Program Limits

Here's a short list of what MPM MultiPlugMate can't do for you quite yet:

4.1. Computer name, domain and workgroup

Changing the computer name, the currently logged in domain or workgroup isn't supported by MPM MultiPlugMate yet. (This feature may be implemented in future versions. Send requests to info@gs lantern.com.)

4.2. Dial-up connections

MPM MultiPlugMate ignores Windows Dial-up connections. These types of connections may also have TCP / IP settings which can't be saved in the profiles either. Because these settings depend on the Internet provider and not on the LAN, it isn't necessary to manage Dial-up connection settings with MPM profiles. Telephone and modem settings aren't handled by MPM either, even if there are location specific settings, e.g. dial prefixes. If these settings are required, they must be adjusted manually.

4.3. MS Firewall client

The "Microsoft Firewall Clients (ISATRAY.EXE)" settings aren't currently supported by MPM MultiPlugMate. These settings must be adjusted manually. (This feature may be implemented in future versions. Send requests to info@gs lantern.com.)

4.4. Languages

English and German (Deutsch) are supported by MPM. When there is demand for more languages, it may be possible to implement them in the future. (Send requests to info@gs lantern.com.)

5. System Requirements

MPM MultiPlugMate works with MS Windows 2000 and Windows XP. Windows NT4, Windows 9x, and Windows ME are not supported!

At least one network adapter should be installed. Otherwise, MPM MultiPlugMate is useless to you.

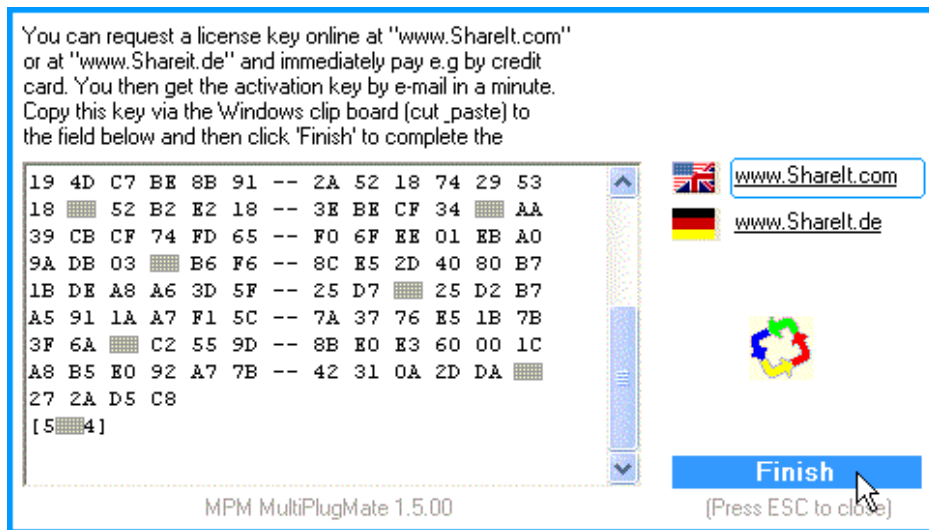
Internally, MPM MultiPlugMate needs the MS Visual BASIC 6 runtime environment files. These files come with all supported Windows versions, as well as the system components "Microsoft Scripting" and "Windows Scripting Host," which are also required.

6. Registration / Licensing



This dialog shows the remaining evaluation period days

Start the registration process with the button "Register" in MPM's main window. This calls the "About" dialog first. The registration form can be opened with the button "Register NOW!"



MPM's registration dialog

The web links www.ShareIt.de and www.ShareIt.com lead you directly to the English or German MPM MultiPlugMate registration pages on the internet. Of course, your computer must be connected to the internet. You can buy your license online. The registration key is delivered per e-mail within a few minutes. With this key you can activate your copy of MPM MultiPlugMate.

Copy the license key from the mail program via the Windows clipboard (cut & paste) into the large input field in MPM's registration dialog. After clicking on the "Finish" button, the process is completed and the 30 days evaluation period is canceled.

Note: The MPM MultiPlugMate license is valid for all program versions of a main version number. For example, if you have licensed Version 1.1, your license is valid for all versions

1.2, 1.3, up to 1.9.99. However, to work with version 2.x, you must buy a license update.

After the registration is successfully completed, MPM MultiPlugMate shows the license owner's data in the "About" dialog.



After registration, the license owner's data is shown

7. Legal Disclaimer

THIS SOFTWARE 'MPM MultiPlugMate' IS PROVIDED "AS IS" AND ANY EXPRESSED OR IMPLIED WARRANTIES, INCLUDING, BUT NOT LIMITED TO, THE IMPLIED WARRANTIES OF MERCHANTABILITY AND FITNESS FOR A PARTICULAR PURPOSE ARE DISCLAIMED. IN NO EVENT SHALL THE AUTHOR OF THIS SOFTWARE, K. HOFACKER, HAMBURG, GERMANY, BE LIABLE FOR ANY DIRECT, INDIRECT, INCIDENTAL, SPECIAL, EXEMPLARY, OR CONSEQUENTIAL DAMAGES (INCLUDING, BUT NOT LIMITED TO, PROCUREMENT OF SUBSTITUTE GOODS OR SERVICES; LOSS OF USE, DATA, OR PROFITS; OR BUSINESS INTERRUPTION) HOWEVER CAUSED AND ON ANY THEORY OF LIABILITY, WHETHER IN CONTRACT, STRICT LIABILITY, OR TORT (INCLUDING NEGLIGENCE OR OTHERWISE) ARISING IN ANY WAY OUT OF THE USE OF THIS SOFTWARE, EVEN IF ADVISED OF THE POSSIBILITY OF SUCH DAMAGE.

DIE SOFTWARE 'MPM MultiPlugMate' WIRD 'SO WIE SIE IST' ZUR VERFÜGUNG GESTELLT. DURCH DEN ANBIETER K. HOFACKER, HAMBURG, DEUTSCHLAND, WERDEN WEDER EXPLIZIT NOCH IMPLIZIT GARANTIE ÜBERNOMMEN, AUCH NICHT DAFÜR, DAß SICH DIE SOFTWARE FÜR EINEN BESTIMMTEN ZWECK EIGNET. FÜR ETWAIGE SCHÄDEN AN HARD - UND SOFTWARE SOWIE JEDLICHEN DATENVERLUST UND ALLE SICH DARAUS FÜR DEN ANWENDER ERGEBENDEN FOLGEN UND ETWAIGE MATERIELLE ODER IMMATERIELLE SCHÄDEN ODER VERLUSTE WERDEN KEINERLEI GARANTIE ÜBERNOMMEN! AUF DIE NOTWENDIGKEIT REGELMÄßIGER DATENSICHERUNGEN - AUCH UND GERADE DER SYSTEMBEREICHE VON WINDOWS -, IM ZUSTAND VOR DEM EINSATZ DER SOFTWARE 'MPM MultiPlugMate' WIRD AUSDRÜCKLICH HINGEWIESEN.

Microsoft, Windows, Windows 2000, Microsoft Windows XP are trademarks or registered trademarks of Microsoft Corporation, United States of America. For more information see www.microsoft.com. Other product and company names may be the trademarks or registered trademarks of their respective owners.

The software MPM MultiPlugMate is copyright of Karl-Heinz Hofacker, Hamburg, Germany. ALL RIGHTS RESERVED.

For more information see www.GsLantern.com

(Last change: November 2004)